

Compal Confidential

Model Name : JM40-HR
File Name : LA-7231P

Compal Confidential

JM40-HR M/B Schematics Document
Intel Sandy Bridge Processor with DDRIII + Cougar Point PCH
Nvidia N12P-GS/GV-OP

2010-02-22

REV:1.0

ZZZ

Part Number	Description
DAZ01Q00100	

P4LJ0_PCB
PCB P4LJ0 LA-7231P LS-7231P/7233P/7235P/7237P

ZZZ

Part Number	Description
DC30100DT00	DC IN CABLE 90W

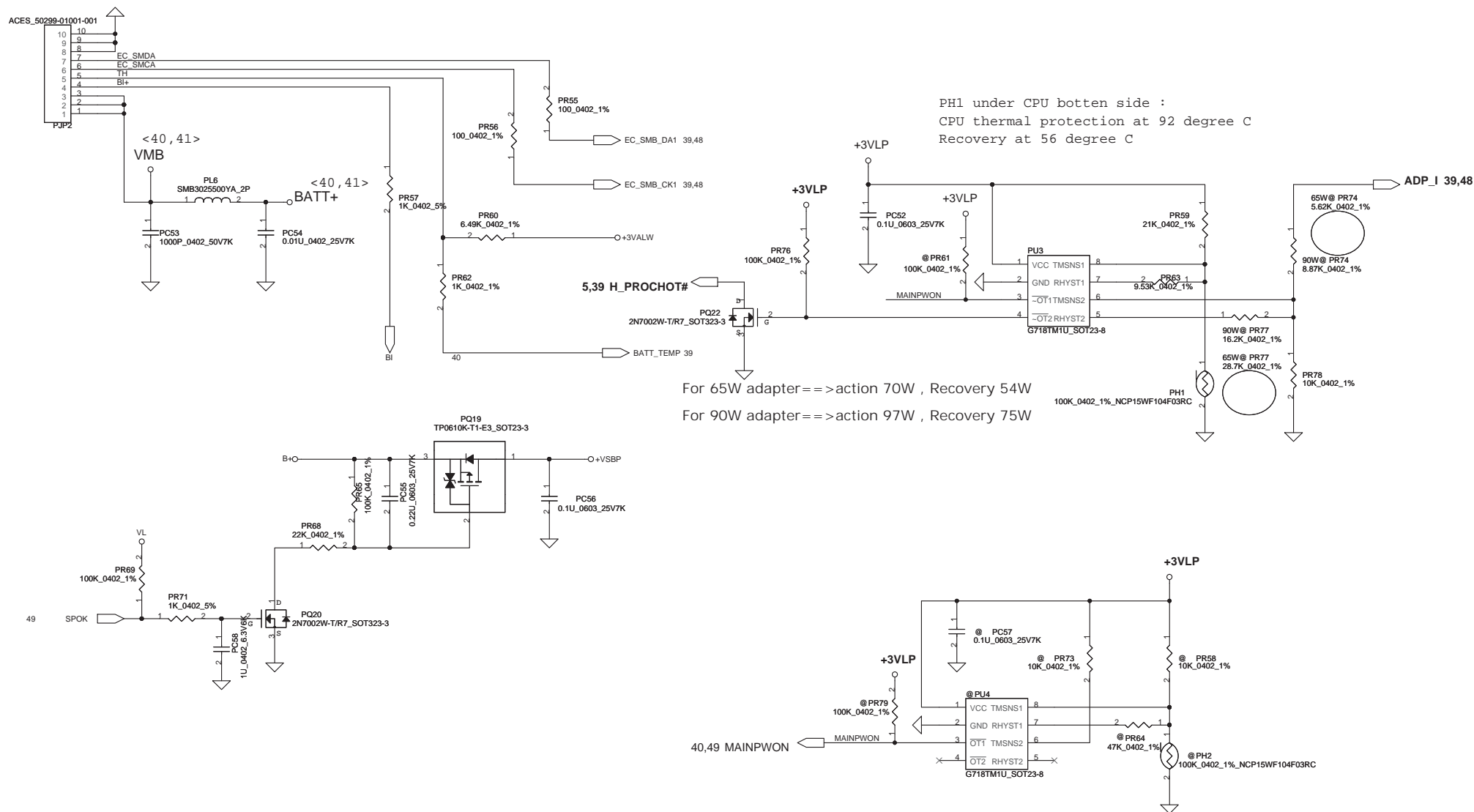
P4LJ0_DCIN_CABLE_90W
90W@

ZZZ

Part Number	Description
DC30100DS00	DC IN CABLE 65W

P4LJ0_DCIN_CABLE_65W
65W@

Security Classification	Compal Secret Data			Compal Electronics, Inc.		
Issued Date	2010/09/28	Deciphered Date	2011/09/28	Title		
THIS SHEET OF ENGINEERING DRAWING IS THE PROPRIETARY PROPERTY OF COMPAL ELECTRONICS, INC. AND CONTAINS CONFIDENTIAL AND TRADE SECRET INFORMATION. THIS SHEET MAY NOT BE TRANSFERRED FROM THE CUSTODY OF THE COMPETENT DIVISION OF R&D DEPARTMENT EXCEPT AS AUTHORIZED BY COMPAL ELECTRONICS, INC. NEITHER THIS SHEET NOR THE INFORMATION IT CONTAINS MAY BE USED BY OR DISCLOSED TO ANY THIRD PARTY WITHOUT PRIOR WRITTEN CONSENT OF COMPAL ELECTRONICS, INC.				SCHEMATIC, MB LA-7231P		
				Size	Document Number	Rev
				Custom	4019BL	B
				Date:	Friday, March 04, 2011	Sheet 1 of 57



Security Classification		Compal Secret Data		Compal Electronics, Inc.	
Issued Date	2010/01/25	Deciphered Date	2010/12/31	Title	SCHEMATIC, MB LA-7231P
THIS SHEET OF ENGINEERING DRAWING IS THE PROPRIETARY PROPERTY OF COMPAL ELECTRONICS, INC. AND CONTAINS CONFIDENTIAL AND TRADE SECRET INFORMATION. THIS SHEET MAY NOT BE TRANSFERRED FROM THE CUSTODY OF THE COMPETENT DIVISION OF R&D DEPARTMENT EXCEPT AS AUTHORIZED BY COMPAL ELECTRONICS, INC. NEITHER THIS SHEET NOR THE INFORMATION IT CONTAINS MAY BE USED BY OR DISCLOSED TO ANY THIRD PARTY WITHOUT PRIOR WRITTEN CONSENT OF COMPAL ELECTRONICS, INC.				Size Custom	Document Number 4019BL
				Date	Friday, March 04, 2011
				Sheet	50 of 57
				Rev	B

Version change list (P.I.R. List)

Page 1 of 2
for PWR

Item	Fixed Issue	Reason for change	Rev.	PG#	Modify List	Date	Phase
1	HW/Edward request	Meet Turn off sequence		53	Add PQ45	2010 11/24	DVT
2	HW/Edward request	Meet Turn on sequence		53	Change PR119 to 680KΩ, PC95 to 0.1uF	2010 11/27	DVT
3	HW/Edward request	Meet new VGA table		55	Change PR201, PR205, PR219	2010 12/03	DVT
4	Battery Turn on time too long	Change enable 3/5V path				2010 12/04	DVT
5	HW/Edward request	For USB 3.0 charger function		47	Add PJ26	2010 12/04	DVT
6	HW/Edward request	Don't need VGA_PW_OK net		55	Delete net	2010 12/04	DVT
7	HW/Edward request	Tune Power sequence		52	Change PR92 from 100K to 510K Delete PR94	2010 12/08	DVT
8	HW/Edward request	Tune Power sequence		53	Change PR116 from 24.9K to 100K	2010 12/09	DVT
9	Costdown			54	Change PC97, PC111 to OS-CON cap.	2011 01/06	PVT
10	ISN test fail	ISN solution		49	Change PL16 to 1uH Add PC109, PC119	2011 01/07	PVT
11	Trigger ACOC	Prevent to trigger phase to gnd threshold Reserve RC for ADP_I		48	Change PC28 from 2.2u to 0.1u Add PR72	2011 01/24	PVT2
12							
13							
14							
15							
16							
17							

Security Classification	Compal Secret Data		Title	
Issued Date	2010/04/12	Deciphered Date	2010/10/12	Compal Electronics, Inc.
THIS SHEET OF ENGINEERING DRAWING IS THE PROPRIETARY PROPERTY OF COMPAL ELECTRONICS, INC. AND CONTAINS CONFIDENTIAL AND TRADE SECRET INFORMATION. THIS SHEET MAY NOT BE TRANSFERRED FROM THE CUSTODY OF THE COMPETENT DIVISION OF R&D DEPARTMENT EXCEPT AS AUTHORIZED BY COMPAL ELECTRONICS, INC. NEITHER THIS SHEET NOR THE INFORMATION IT CONTAINS MAY BE USED BY OR DISCLOSED TO ANY THIRD PARTY WITHOUT PRIOR WRITTEN CONSENT OF COMPAL ELECTRONICS, INC.				Document Number
				4019BL
Date: Friday, March 04, 2011				Rev B
Sheet 56 of 57				

www.s-manuals.com